

**Accelerated Article Preview**

# A pneumonia outbreak associated with a new coronavirus of probable bat origin

---

Received: 20 January 2020

---

Accepted: 29 January 2020

---

Accelerated Article Preview

---

Published online 3 February 2020

---

Cite this article as: Zhou, P. et al. A pneumonia outbreak associated with a new coronavirus of probable bat origin. *Nature* <https://doi.org/10.1038/s41586-020-2012-7> (2020).

---

Open access

---

Peng Zhou, Xing-Lou Yang, Xian-Guang Wang, Ben Hu, Lei Zhang, Wei Zhang, Hao-Rui Si, Yan Zhu, Bei Li, Chao-Lin Huang, Hui-Dong Chen, Jing Chen, Yun Luo, Hua Guo, Ren-Di Jiang, Mei-Qin Liu, Ying Chen, Xu-Rui Shen, Xi Wang, Xiao-Shuang Zheng, Kai Zhao, Quan-Jiao Chen, Fei Deng, Lin-Lin Liu, Bing Yan, Fa-Xian Zhan, Yan-Yi Wang, Geng-Fu Xiao & Zheng-Li Shi

---

This is a PDF file of a peer-reviewed paper that has been accepted for publication. Although unedited, the content has been subjected to preliminary formatting. Nature is providing this early version of the typeset paper as a service to our authors and readers. The text and figures will undergo copyediting and a proof review before the paper is published in its final form. Please note that during the production process errors may be discovered which could affect the content, and all legal disclaimers apply.

# A pneumonia outbreak associated with a new coronavirus of probable bat origin

<https://doi.org/10.1038/s41586-020-2012-7>

Received: 20 January 2020

Accepted: 29 January 2020

Published online: 3 February 2020

Open access

Peng Zhou<sup>1,5</sup>, Xing-Lou Yang<sup>1,5</sup>, Xian-Guang Wang<sup>2,5</sup>, Ben Hu<sup>1</sup>, Lei Zhang<sup>1</sup>, Wei Zhang<sup>1</sup>, Hao-Rui Si<sup>1,3</sup>, Yan Zhu<sup>1</sup>, Bei Li<sup>1</sup>, Chao-Lin Huang<sup>2</sup>, Hui-Dong Chen<sup>2</sup>, Jing Chen<sup>1,3</sup>, Yun Luo<sup>1,3</sup>, Hua Guo<sup>1,3</sup>, Ren-Di Jiang<sup>1,3</sup>, Mei-Qin Liu<sup>1,3</sup>, Ying Chen<sup>1,3</sup>, Xu-Rui Shen<sup>1,3</sup>, Xi Wang<sup>1,3</sup>, Xiao-Shuang Zheng<sup>1,3</sup>, Kai Zhao<sup>1,3</sup>, Quan-Jiao Chen<sup>1</sup>, Fei Deng<sup>1</sup>, Lin-Lin Liu<sup>4</sup>, Bing Yan<sup>1</sup>, Fa-Xian Zhan<sup>4</sup>, Yan-Yi Wang<sup>1</sup>, Geng-Fu Xiao<sup>1</sup> & Zheng-Li Shi<sup>1\*</sup>

Since the SARS outbreak 18 years ago, a large number of severe acute respiratory syndrome-related coronaviruses (SARSr-CoV) have been discovered in their natural reservoir host, bats<sup>1–4</sup>. Previous studies indicated that some of those bat SARSr-CoVs have the potential to infect humans<sup>5–7</sup>. Here we report the identification and characterization of a novel coronavirus (2019-nCoV) which caused an epidemic of acute respiratory syndrome in humans in Wuhan, China. The epidemic, which started from 12 December 2019, has caused 2,050 laboratory-confirmed infections with 56 fatal cases by 26 January 2020. Full-length genome sequences were obtained from five patients at the early stage of the outbreak. They are almost identical to each other and share 79.5% sequence identity to SARS-CoV. Furthermore, it was found that 2019-nCoV is 96% identical at the whole-genome level to a bat coronavirus. The pairwise protein sequence analysis of seven conserved non-structural proteins show that this virus belongs to the species of SARSr-CoV. The 2019-nCoV virus was then isolated from the bronchoalveolar lavage fluid of a critically ill patient, which can be neutralized by sera from several patients. Importantly, we have confirmed that this novel CoV uses the same cell entry receptor, ACE2, as SARS-CoV.

Coronavirus has caused two large-scale pandemic in the last two decades, SARS and MERS (Middle East respiratory syndrome)<sup>8,9</sup>. It was generally believed that SARSr-CoV, mainly found in bats, might cause future disease outbreak<sup>10,11</sup>. Here we report on a series of unidentified pneumonia disease outbreaks in Wuhan, Hubei province, central China. Started from a local seafood market, the outbreak has grown substantial to infect 2050 people in China with 56 deaths and to infect 35 people in 11 other countries up to January 26, 2020<sup>12</sup>. Typical clinical symptoms of these patients are fever, dry cough, dyspnea, headache, and pneumonia. Disease onset may result in progressive respiratory failure due to alveolar damage (as observed by transverse chest CT images) and even death. The disease was determined as viral induced pneumonia by clinicians according to clinical symptoms and other criteria including body temperature rising, lymphocytes and white blood cells decreasing (sometimes normal for the later), new pulmonary infiltrates on chest radiography, and no obvious improvement upon three days antibiotics treatment. It appears most of the early cases had contact history with the original seafood market, but the disease progressed to human-to-human transmission now.

Samples from seven patients with severe pneumonia (six are seafood market sellers or delivers), who were enrolled in intensive unit cares at the beginning of the outbreak, were sent to WIV laboratory for pathogen diagnosis (Extended Data Table 1). As a CoV lab, we first used

pan-CoV PCR primers to test these samples<sup>13</sup>, considering the outbreak happened in winter and in a market, same environment as SARS. We found five PCR positive. A sample (WIV04) collected from bronchoalveolar lavage fluid (BALF) was analysed by metagenomics analysis using next-generation sequencing (NGS) to identify potential etiological agents. Of the 10,038,758 total reads, or 1582 total reads obtained after human genome filtering, 1378 (87.1%) matched sequences of SARSr-CoV (Fig. 1a). By *de novo* assembly and targeted PCR, we obtained a 29,891-bp CoV genome that shared 79.5% sequence identity to SARS-CoV BJ01 (GenBank accession number AY278488.2). High genome coverage was obtained by remapping the total reads to this genome (Extended Data Figure 1). This sequence has been submitted to GISAID (accession no. EPI\_ISL\_402124). Following the name by WHO, we tentatively call it novel coronavirus 2019 (2019-nCoV). Four more full-length genome sequences of 2019-nCoV (WIV02, WIV05, WIV06, and WIV07) (GISAID accession nos. EPI\_ISL\_402127–402130) that were above 99.9% identical to each other were subsequently obtained from other four patients using NGS and PCR (Extended Data Table 2).

The virus genome consists of six major open reading frames (ORFs) common to coronaviruses and a number of other accessory genes (Fig. 1b). Further analysis indicates that some of the 2019-nCoV genes shared less than 80% nt sequence identity to SARS-CoV. However, the seven conserved replicase domains in ORF1ab that were used for

<sup>1</sup>CAS Key Laboratory of Special Pathogens, Wuhan Institute of Virology, Center for Biosafety Mega-Science, Chinese Academy of Sciences, Wuhan, People's Republic of China. <sup>2</sup>Wuhan Jinyintan Hospital, Wuhan, China. <sup>3</sup>University of Chinese Academy of Sciences, Beijing, People's Republic of China. <sup>4</sup>Hubei Provincial Center for Disease Control and Prevention, Wuhan, People's Republic of China. <sup>5</sup>These authors contributed equally: Peng Zhou, Xing-Lou Yang, Xian-Guang Wang. \*e-mail: zlishi@wh.iov.cn

CoV species classification, are 94.6% aa sequence identical between 2019-nCoV and SARS-CoV, implying the two belong to same species (Extended Data Table 3).

We then found a short RdRp region from a bat coronavirus termed BatCoV RaTG13 which we previously detected in *Rhinolophus affinis* from Yunnan Province showed high sequence identity to 2019-nCoV. We did full-length sequencing to this RNA sample (GISAID accession no. EPI\_ISL\_402131). Simplot analysis showed that 2019-nCoV was highly similar throughout the genome to RaTG13 (Fig. 1c), with 96.2% overall genome sequence identity. Using the aligned genome sequences of 2019-nCoV, RaTG13, SARS-CoV and previously reported bat SARSr-CoVs, no evidence for recombination events was detected in the genome of 2019-nCoV. The phylogenetic analysis of full-length genome, RNA-dependent RNA polymerase (RdRp) gene and S gene sequences all showed that RaTG13 is the closest relative of the 2019-nCoV and form a distinct lineage from other SARSr-CoVs (Fig. 1d and Extended Data Figure 2). The receptor binding protein spike (S) gene was highly divergent to other CoVs (Extended Data Figure 2), with less than 75% nt sequence identity to all previously described SARSr-CoVs except a 93.1% nt identity to RaTG13 (Extended Data Table 3). The S genes of 2019-nCoV and RaTG13 S gene are longer than other SARSr-CoVs. The major differences in 2019-nCoV are the three short insertions in the N-terminal domain, and four out of five key residues changes in the receptor-binding motif, in comparison with SARS-CoV (Extended Data Figure 3). Whether the insertions in N-terminal domain of 2019-nCoV confers a sialic acid binding activity like MERS-CoV needs to be further studied. The close phylogenetic relationship to RaTG13 provides evidence for a bat origin of 2019-nCoV.

We rapidly developed a qPCR detection based on the receptor-binding domain of spike gene, the most variable region among genome (Fig. 1c). Our data show the primers could differentiate 2019-nCoV with all other human coronaviruses including bat SARSr-CoV WIV1, which is 95% identity to SARS-CoV (Extended Data Figure 4a and 4b). From the seven patients, we found 2019-nCoV positive in six BALF and five oral swab samples during the first sampling by qPCR and conventional PCR. However, we can no longer find viral positive in oral swabs, anal swabs, and blood from these patients during the second sampling (Fig. 2a). We have to point out that other qPCR targets including RdRp or E gene may be suggested for routine detection. Based on these findings, we presume that the disease should be transmitted through airway, yet we can't rule out other possibilities if the investigation extended to include more patients.

For serological detection of 2019-nCoV, we used previously developed bat SARSr-CoV Rp3 nucleocapsid protein (NP) as antigen in IgG and IgM ELISA test, which shared 92% amino acid identity to 2019-nCoV NP (Extended Data Figure 5) and showed no cross-reactivity against other human coronaviruses except SARSr-CoV<sup>7</sup>. As a research lab, we were only able to get five serum samples from the seven viral infected patients. We monitored viral antibody levels in one patient (ICU-06) at seven, eight, nine, and eighteen days after disease onset (Extended Data Table 2). A clear trend of IgG and IgM titre (decreased at the last day) increase was observed (Fig. 2b). For a second investigation, we tested viral antibody for five of the seven viral positive patients around twenty days after disease onset (Extended Data Table 1 and 2). All patient samples, but not samples from healthy people, showed strong viral IgG positive (Fig. 2b). We also found three IgM positive, indicating acute infection.

We then successfully isolated the virus (named 2019-nCoV BetaCoV/Wuhan/WIV04/2019), in both Vero and Huh7 cells using BALF sample from ICU-06 patient. Clear cytopathogenic effects were observed in cells after three days incubation (Extended Data Figure 6a and 6b). The identity of the strain WIV04 was verified in Vero E6 cells by immunofluorescence microscopy using cross-reactive viral NP antibody (Extended Data Figure 6c and 6d), and by metagenomic sequencing, from which most of the reads mapped to 2019-nCoV and qPCR showing

viral load increase from day 1 to day 3 (Extended Data Figure 6e and 6f). Viral particles in ultrathin sections of infected cells displayed typical coronavirus morphology under electron microscopy (Extended Data Figure 6g). To further confirm the neutralization activity of the viral IgG positive samples, we conducted serum-neutralization assays in Vero E6 cells using the five IgG positive patient sera. We demonstrate that all samples were able to neutralize 120 TCID50 2019-nCoV at a dilution of 1:40-1:80. We also show that this virus could be cross-neutralized by horse anti-SARS-CoV serum (offered by L-F Wang) at dilutions 1:80, but the potential for cross reactivity with SARS-CoV antibodies needs to be confirmed with anti-SARS-CoV serum from humans (Extended Data Table 4).

Angiotensin converting enzyme II (ACE2) was known as cell receptor for SARS-CoV<sup>14</sup>. To determine whether 2019-nCoV also use ACE2 as a cellular entry receptor, we conducted virus infectivity studies using HeLa cells expressing or not expressing ACE2 proteins from humans, Chinese horseshoe bats, civet, pig, and mouse. We show that 2019-nCoV is able to use all but mouse ACE2 as an entry receptor in the ACE2-expressing cells, but not cells without ACE2, indicating which is likely the cell receptor of 2019-nCoV (Fig. 3). We also proved that 2019-nCoV does not use other coronavirus receptors, aminopeptidase N and dipeptidyl peptidase 4 (Extended Data Figure 7).

The study provides the first detailed report on 2019-nCoV, the likely etiology agent responsible for ongoing acute respiratory syndrome epidemic in Wuhan, central China. Viral specific nucleotide positive and viral protein seroconversion observed in all patients tested provides evidence of an association between the disease and the presence of this virus. However, there are still many urgent questions to be answered. The association between the 2019-nCoV and the disease has not been proved by animal experiments to full the Koch postulates. We don't know the transmission routine of this virus among hosts yet. It seems the virus is becoming more transmissible between human-to-human. We should closely monitor if the virus continue evolving to become more virulent. Owing to shortage of specific treatment and considering the relatedness between SARS-CoV and 2019-nCoV, some drugs and pre-clinical vaccine against SARS-CoV probably can be applied to this virus. Finally, considering the wide spread of SARSr-CoV in their natural reservoirs, future research should be focused on active surveillance of these viruses through a broader geographic regions. In the long-term, broad-spectrum antiviral drugs and vaccine should be prepared for the future emerging infectious diseases caused by this cluster of virus. Most importantly, strict regulations against the wildlife domestication and consuming should be implemented.

## Online content

Any methods, additional references, Nature Research reporting summaries, source data, extended data, supplementary information, acknowledgements, peer review information; details of author contributions and competing interests; and statements of data and code availability are available at <https://doi.org/10.1038/s41586-020-2012-7>.

- Li, W. D. *et al.* Bats are natural reservoirs of SARS-like coronaviruses. *Science* **310**, 676-679, (2005).
- Ge, X. Y. *et al.* Isolation and characterization of a bat SARS-like coronavirus that uses the ACE2 receptor. *Nature* **503**, 535-+, (2013).
- Yang, L. *et al.* Novel SARS-like Betacoronaviruses in Bats, China, 2011. *Emerg Infect Dis* **19**, 989-991, (2013).
- Hu, B. *et al.* Discovery of a rich gene pool of bat SARS-related coronaviruses provides new insights into the origin of SARS coronavirus. *PLoS pathogens* **13**, e1006698, (2017).
- Menachery, V. D. *et al.* A SARS-like cluster of circulating bat coronaviruses shows potential for human emergence. *Nat Med* **21**, 1508-1513, (2015).
- Menachery, V. D. *et al.* SARS-like WIV1-CoV poised for human emergence. *Proc Natl Acad Sci U S A* **113**, 3048-3053, (2016).
- Wang, N. *et al.* Serological Evidence of Bat SARS-Related Coronavirus Infection in Humans, China. *Virology* **33**, 104-107, (2018).
- Drosten, C. *et al.* Identification of a novel coronavirus in patients with severe acute respiratory syndrome. *New Engl J Med* **348**, 1967-1976, (2003).

9. Zaki, A. M., van Boheemen, S., Bestebroer, T. M., Osterhaus, A. D. M. E. & Fouchier, R. A. M. Isolation of a Novel Coronavirus from a Man with Pneumonia in Saudi Arabia. *New Engl J Med* **367**, 1814-1820, (2012).
10. Cui, J., Li, F. & Shi, Z. L. Origin and evolution of pathogenic coronaviruses. *Nat Rev Microbiol* **17**, 181-192, (2019).
11. Fan, Y., Zhao, K., Shi, Z. L. & Zhou, P. Bat Coronaviruses in China. *Viruses* **11**, (2019).
12. Wuhan Municipal Health Commission. *Press statement related to novel coronavirus infection (in Chinese)*, (2020).
13. Poon, L. L. et al. Identification of a novel coronavirus in bats. *Journal of virology* **79**, 2001-2009, (2005).
14. Li, W. et al. Angiotensin-Converting Enzyme 2 Is a Functional Receptor for the Sars Coronavirus. *Nature* **426**, 450-454, (2003).

**Publisher's note** Springer Nature remains neutral with regard to jurisdictional claims in published maps and institutional affiliations.

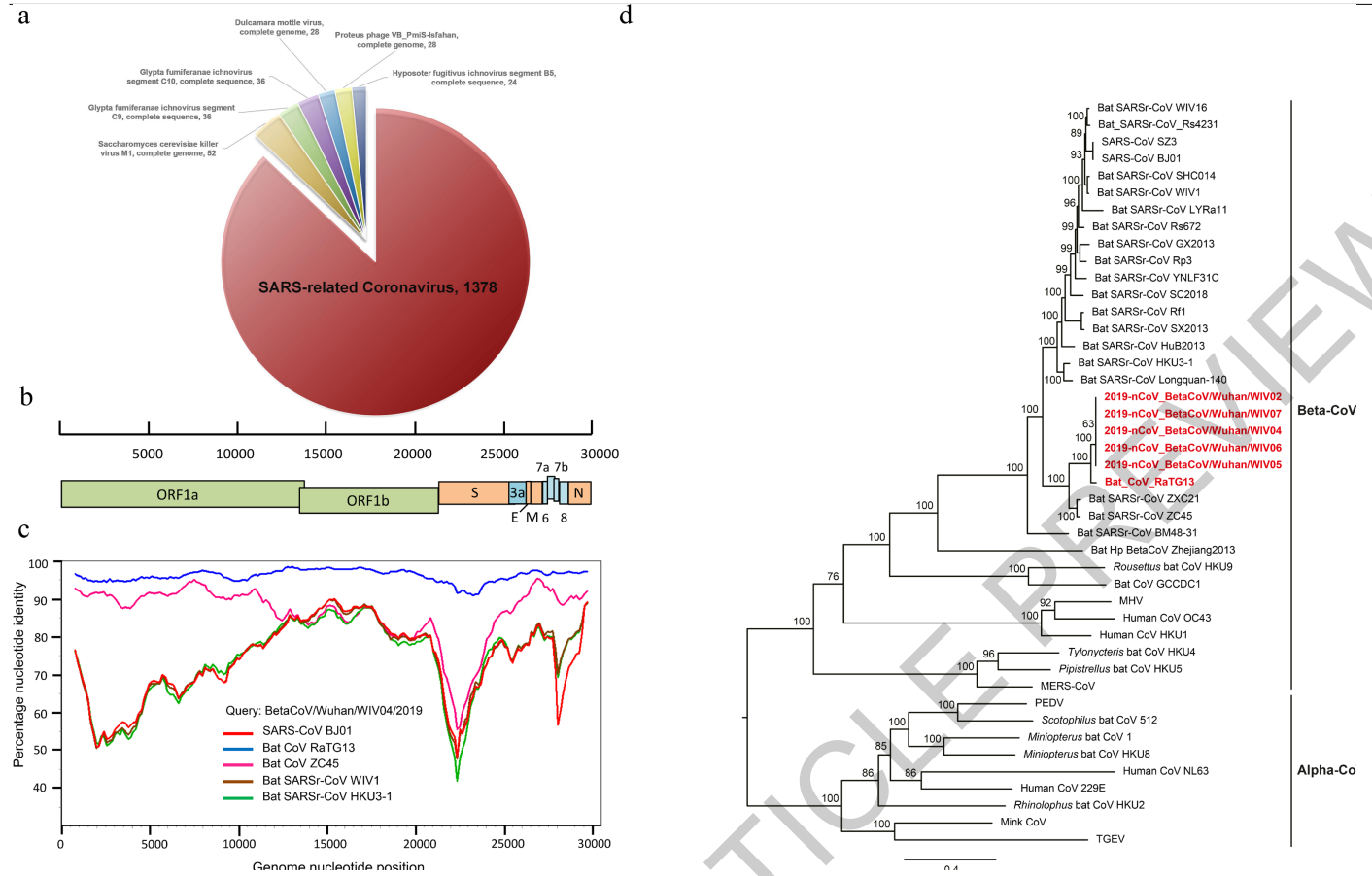


**Open Access** This article is licensed under a Creative Commons Attribution 4.0 International License, which permits use, sharing, adaptation, distribution and reproduction in any medium or format, as long as you give appropriate credit to the original author(s) and the source, provide a link to the Creative Commons license, and indicate if changes were made. The images or other third party material in this article are included in the article's Creative Commons license, unless indicated otherwise in a credit line to the material. If material is not included in the article's Creative Commons license and your intended use is not permitted by statutory regulation or exceeds the permitted use, you will need to obtain permission directly from the copyright holder. To view a copy of this license, visit <http://creativecommons.org/licenses/by/4.0/>.

© The Author(s) 2020

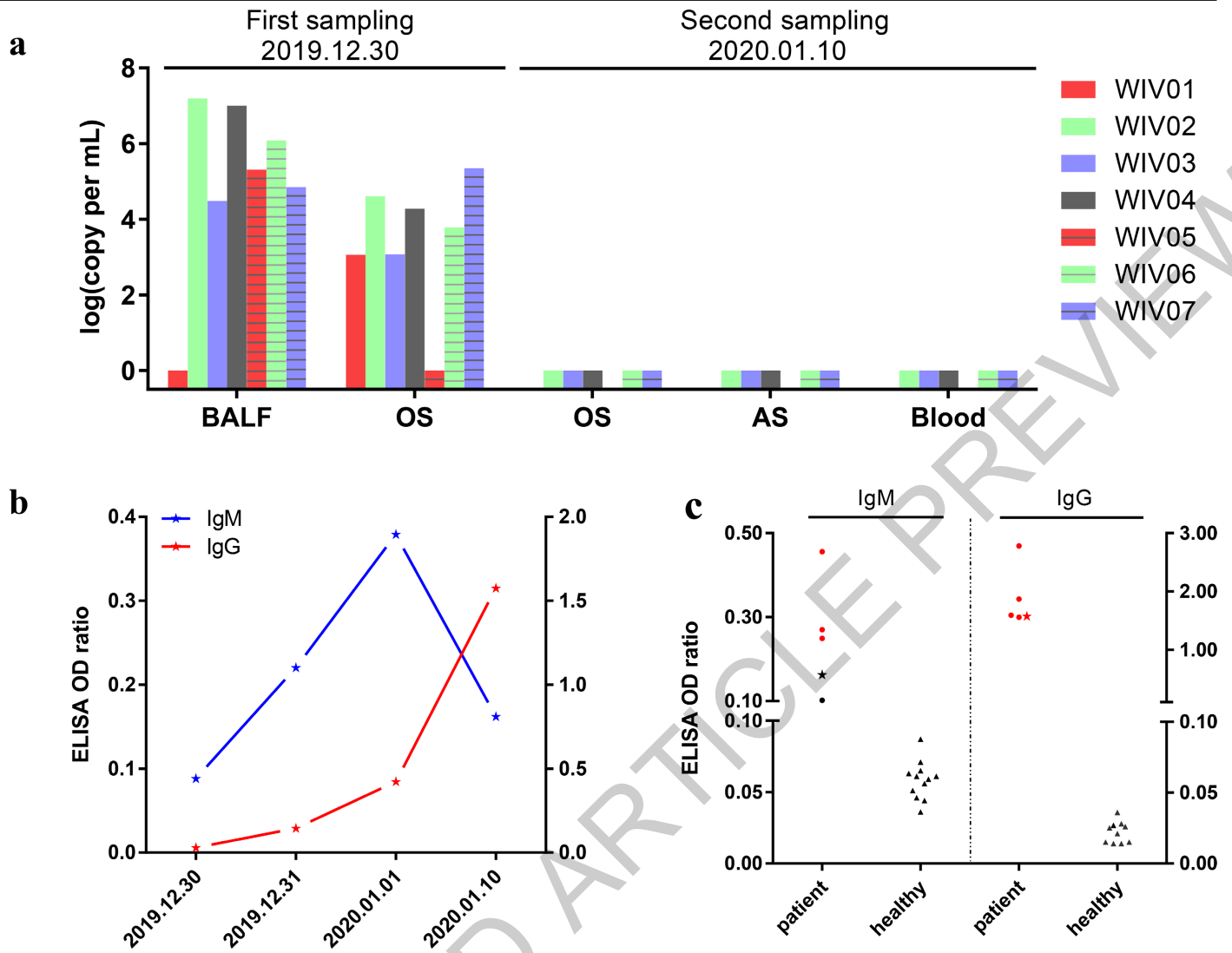
ACCELERATED ARTICLE PREVIEW





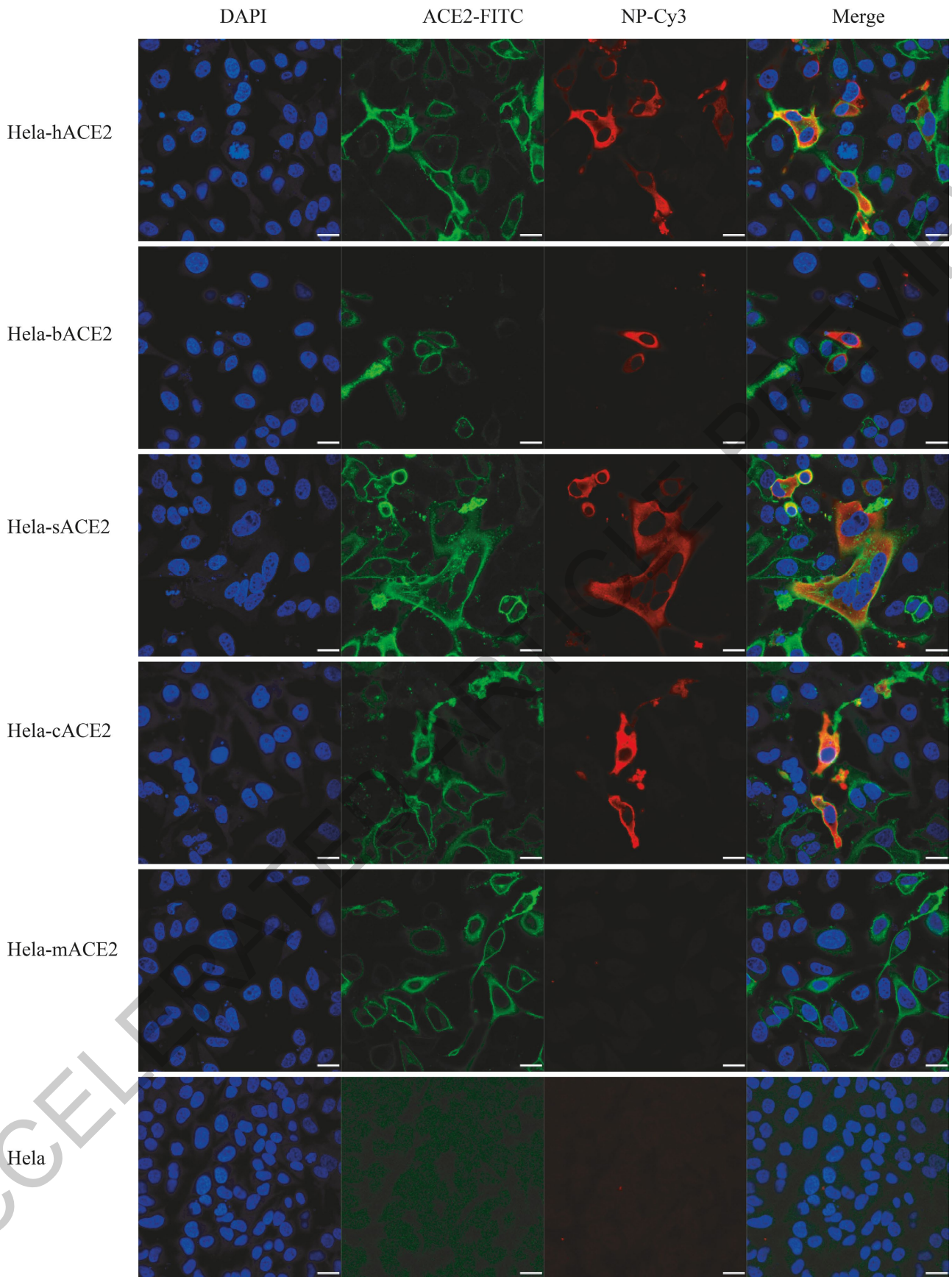
**Fig. 1 | Genome characterization of 2019-nCoV. a**, pie chart showing metagenomics analysis of next-generation sequencing of bronchoalveolar lavage fluid from patient ICU06. **b**, Genomic organization of 2019-nCoV WIV04. **c**, Similarity plot based on the full-length genome sequence of 2019-nCoV WIV04. Full-length genome sequences of SARS-CoV BJ01, bat SARSr-CoV WIV1,

bat coronavirus RaTG13 and ZC45 were used as reference sequences. **d**, Phylogenetic tree based on nucleotide sequences of complete genomes of coronaviruses. Software used and settings can be found in material and method section.



**Fig. 2 | Molecular and serological investigation of patient samples. a,** molecular detection of 2019-nCoV in seven patients during two times of sampling. Patient information can be found in Extended Data Table 1 and 2. Details on detection method can be found in material and methods. BALF, bronchoalveolar lavage fluid; OS, oral swab; AS, anal swab. **b,** dynamics of

2019-nCoV antibodies in one patient who showed sign of disease on 2019.12.23 (ICU-06). **c,** serological test of 2019-nCoV antibodies in five patients (more information can be found in Extended Data Table 2). Star indicates data collected from patient ICU-06 on 2020.01.10. For b and c, cut-off was set up as 0.2 for IgM test and 0.3 for IgG test, according to healthy controls.



**Fig. 3 | Analysis of 2019-nCoV receptor usage.** Determination of virus infectivity in HeLa cells with or without the expression of ACE2. h, human; b, *Rhinolophus sinicus* bat; c, civet; s, swine (pig); m, mouse. ACE2 protein (green), viral protein (red) and nuclei (blue) was shown. Scale bar=10 um.

## Methods

### Sample collection

Human samples, including oral swabs, anal swabs, blood, and BALF samples were collected by Jinyintan hospital (Wuhan) with the consent from all patients and approved by the ethics commission of the designated hospital for emerging infectious diseases. Patients were sampled without gender or age preference unless where indicated. For swabs, 1.5 ml DMEM+2% FBS medium was added each tube. Supernatant was collected after 2500 rpm, 60 s vortex and 15-30 min standing. Supernatant from swabs or BALF (no pretreatment) was added to either lysis buffer for RNA extraction or to viral transport medium (VTM) for virus isolation. VTM composed of Hank's balanced salt solution at pH7.4 containing BSA (1%), amphotericin (15 µg/ml), penicillin G (100 units/ml), and streptomycin (50 µg/ml). Serum was separated by centrifugation at 3,000 g for 15 min within 24 h of collection, followed by 56 °C 30 min inactivation, and then stored at 4 °C until use.

### Virus isolation, cell infection, electron microscope and neutralization assay

The following cells were used for virus isolation in this study: Vero, Vero E6, and Huh7 that were cultured in DMEM +10% FBS. A list of cells were used for susceptibility test (Extended Data Fig. 6). All cell lines were tested free of mycoplasma contamination, applied to species identification and authenticated by microscopic morphologic evaluation. None of cell lines was on the list of commonly misidentified cell lines (by ICLAC).

Cultured cell monolayers were maintained in their respective medium. PCR-positive BALF sample from ICU-06 patient was spin at 8,000 g for 15 min, filtered and diluted 1:2 with DMEM supplied with 16 µg/ml trypsin before adding to cells. After incubation at 37 °C for 1 h, the inoculum was removed and replaced with fresh culture medium containing antibiotics (below) and 16 µg/ml trypsin. The cells were incubated at 37 °C and observed daily for cytopathic effect (CPE). The culture supernatant was examined for presence of virus by qRT-PCR developed in this study, and cells were examined by immunofluorescent using SARSr-CoV Rp3 NP antibody made in house (1:100). Penicillin (100 units/ml) and streptomycin (15 µg/ml) were included in all tissue culture media.

The Vero E6 cells were infected with new virus at MOI of 0.5 and harvested 48 hpi. Cells were fixed with 2.5% (wt/vol) glutaraldehyde and 1% osmium tetroxide, and then dehydrated through a graded series of ethanol concentrations (from 30 to 100%), and embedded with epoxy resin. Ultrathin sections (80 nm) of embedded cells were prepared, deposited onto Formvar-coated copper grids (200 mesh), stained with uranyl acetate and lead citrate, then observed under 200 kV Tecnai G2 electron microscope.

The virus neutralization test was carried out in a 48-well plate. The patient serum samples were heat-inactivated by incubation at 56 °C for 30 min before use. The serum samples (5 µL) were diluted to 1:10, 1:20, 1:40 or 1:80, and then an equal volume of virus stock was added and incubated at 37 °C for 60 min in a 5% CO<sub>2</sub> incubator. Diluted horse anti SARS-CoV serum or serum samples from healthy people were used as control. After incubation, 100 µL mixtures were inoculated onto monolayer Vero E6 cells in a 48-well plate for 1 hour. Each serum were repeated triplicate. After removing the supernatant, the plate was washed twice with DMEM medium. Cells were incubated with DMEM supplemented with 2% FBS for 24 hours. Then the cells were fixed with 4% formaldehyde. And the virus were detected using SL-CoV Rp3 NP antibody followed by Cy3-conjugated mouse anti-rabbit IgG. Nuclei were stained with DAPI. Infected cell number was counted by high-content cytometers.

### RNA extraction and PCR

Whenever commercial kits were used, manufacturer's instructions were followed without modification. RNA was extracted from 200 µl

of samples with the High Pure Viral RNA Kit (Roche). RNA was eluted in 50 µl of elution buffer and used as the template for RT-PCR.

For qPCR analysis, primers based on 2019-nCoV S gene was designed: RBD-qF1: 5'-CAATGGTTTAAACAGGCACAGG-3'; RBD-qR1: 5'-CTCAAGTGTCTGTGGATCAGC-3'. RNA extracted from above used in qPCR by HiScript® II One Step qRT-PCR SYBR® Green Kit (Vazyme Biotech Co.,Ltd). Conventional PCR test was also performed using the following primer pairs: ND-CoVs-951F TGTKAGRTTYCCTAAYAT-TAC; ND-CoVs-1805R ACATCYTGATANARAACAGC<sup>13</sup>. The 20 µl qPCR reaction mix contained 10 µl 2× One Step SYBR Green Mix, 1 µl One Step SYBR Green Enzyme Mix, 0.4 µl 50× ROX Reference Dye 1, 0.4 µl of each primer (10 uM) and 2 µl template RNA. Amplification was performed as follows: 50 °C for 3 min, 95 °C for 30 s followed by 40 cycles consisting of 95 °C for 10 s, 60 °C for 30 s, and a default melting curve step in an ABI 7700 machine.

### Serological test

In-house anti-SARSr-CoV IgG and IgM ELISA kits were developed using SARSr-CoV Rp3 NP as antigen, which shared above 90% amino acid identity to all SARSr-CoVs<sup>2</sup>. For IgG test, MaxiSorp Nunc-immuno 96 well ELISA plates were coated (100 ng/well) overnight with recombinant NP. Human sera were used at 1:20 dilution for 1 h at 37 °C. An anti-Human IgG-HRP conjugated monoclonal antibody (Kyab Biotech Co., Ltd, Wuhan, China) was used at a dilution of 1:40000. The OD value (450–630) was calculated. For IgM test, MaxiSorp Nunc-immuno 96 well ELISA plates were coated (500 ng/well) overnight with anti-human IgM (µ chain). Human sera were used at 1:100 dilution for 40 min at 37 °C, followed by anti-Rp3 NP-HRP conjugated (Kyab Biotech Co., Ltd, Wuhan, China) at a dilution of 1:4000. The OD value (450–630) was calculated.

### Examination of ACE2 receptor for 2019-nCoV infection

HeLa cells transiently expressing ACE2 were prepared by a lipofectamine 3000 system (Thermo Fisher Scientific) in 96-well plate, with mock-transfected cells as controls. 2019-nCoV grown from Vero E6 cells was used for infection at multiplicity of infection 0.05. Same for testing of APN and DPP4. The inoculum was removed after 1 h absorption and washed twice with PBS and supplemented with medium. At 24 hpi, cells were washed with PBS and fixed with 4% formaldehyde in PBS (pH 7.4) for 20 min at room temperature. ACE2 expression was detected using mouse anti-S tag monoclonal antibody followed by FITC-labelled goat anti-mouse IgG H&L (Abcam, ab96879). Viral replication was detected using rabbit antibody against the Rp3 NP protein (made in house, 1:100) followed by cyanin 3-conjugated goat anti-rabbit IgG (1:50, Abcam, ab6939). Nucleus was stained with DAPI (Beyotime). Staining patterns were examined using the FV1200 confocal microscopy (Olympus).

### High throughput sequencing, pathogen screening and genome assembly

Samples from patient BALF or from virus culture supernatant were used for RNA extraction and next-generation sequencing using BGI MGISEQ2000 and Illumina MiSeq 3000 sequencers. Metagenomic analysis was carried out mainly base on the bioinformatics platform MGmapper (PE\_2.24 and SE\_2.24). The raw NGS reads were firstly processed by Cutadapt (v1.18) with minimum read length of 30bp. BWA (v0.7.12-r1039) was utilized to align reads to local database with a filter hits parameter at 0.8 FMM value and minimum alignment score at 30. Parameters for post-processing of assigned reads was set with minimum size normalized abundance at 0.01, minimum read count at 20 and other default parameters. A local nucleic acid database for human and mammals was employed to filter reads of host genomes before mapping reads to virus database. The results of metagenomic analysis were displayed through pie charts using WPS Office 2010. NGS reads were assembled into genomes using Geneious (v11.0.3) and

# Article

MEGAHIT (v1.2.9). PCR and Sanger sequencing was performed to fill gaps in the genome. 5'-RACE was performed to determine the 5'-end of the genomes using SMARTer RACE 5'/3' Kit (Takara). Genomes were annotated using Clone Manager Professional Suite 8 (Sci-Ed Software).

## Phylogenetic analysis

Routine sequence management and analysis was carried out using DNASTar. The sequence alignment of complete genome sequences was performed by MAFFT (version 7.307) with default parameters. The codon alignments of full-length S and RdRp gene sequences were converted from the corresponding protein alignments by PAL2NAL (version 14), respectively, of which the protein alignments were created by Clustal Omega (version 1.2.4) under default parameters. Maximum Likelihood phylogenetic trees were carried out using RAxML (version 0.9.0) with GTR+G substitution model and 1000 bootstrap replicates.

## Data availability

Sequence data that support the findings of this study have been deposited in GISAID with the accession numbers EPI\_ISL\_402124, EPI\_ISL\_402127–EPI\_ISL\_402130 and EPI\_ISL\_402131.

**Acknowledgements** We thank the Pei Zhang and An-na Du from WIV core facility and technical support for their help with producing TEM micrographs. We thank Hai-Zhou Liu and Ping Yu from WIV for bioinformatics analysis. This work was jointly supported by the Strategic Priority Research Program of the Chinese Academy of Sciences (XDB29010101 to ZLS and XDB29010104 to PZ), China Natural Science Foundation for excellent scholars (81822028 to PZ, 31770175 to ZLS and 31800142 to BH), Mega-Project for Infectious Disease from Minister of Science and Technology of the People's Republic of China (2020ZX09201001 to DYZ and 2018ZX10305409-004-001 to PZ), Youth innovation promotion association of CAS (2019328 to XLY).

**Author contributions** Z.L.S., P.Z., Y.Y.W., and G.F.X. conceived the study. G.S.W., C.L.H., H.D.C., F.D., Q.J.C., F.X.Z., and L.L.L., collected patient samples. X.L.Y., B.Y., W.Z., B.L., J.C., X.S.Z., Y.L., H.G., R.D.J., M.Q.L., Y. Chen, X.W., X.R.S., and K.Z. performed qPCR, serology, and virus culturing. L.Z., Y.Z., H.R.S., and B.H. performed genome sequencing and annotations.

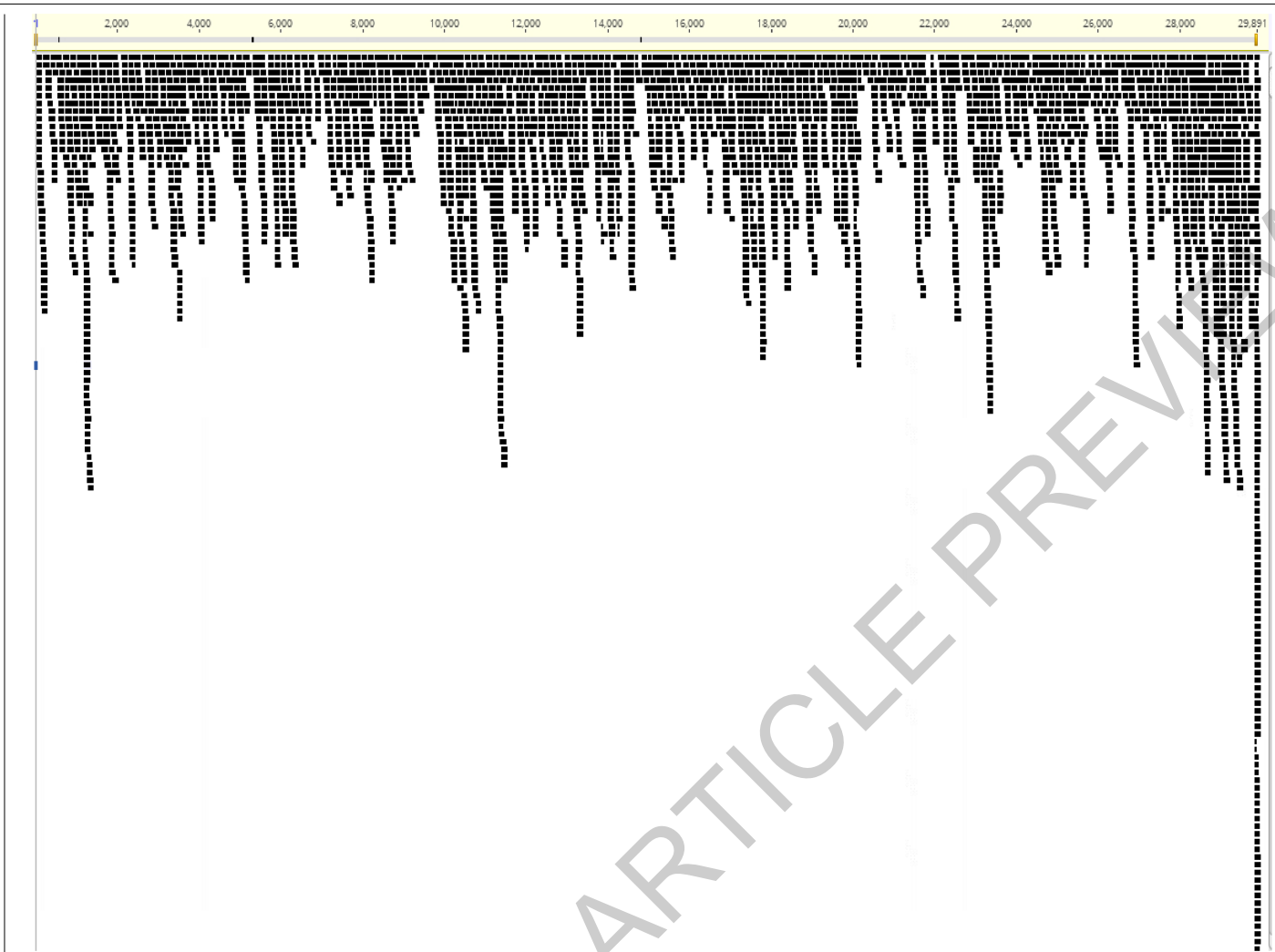
**Competing interests** The authors declare no competing interests.

## Additional information

**Correspondence** and requests for materials should be addressed to Z.-L.S.

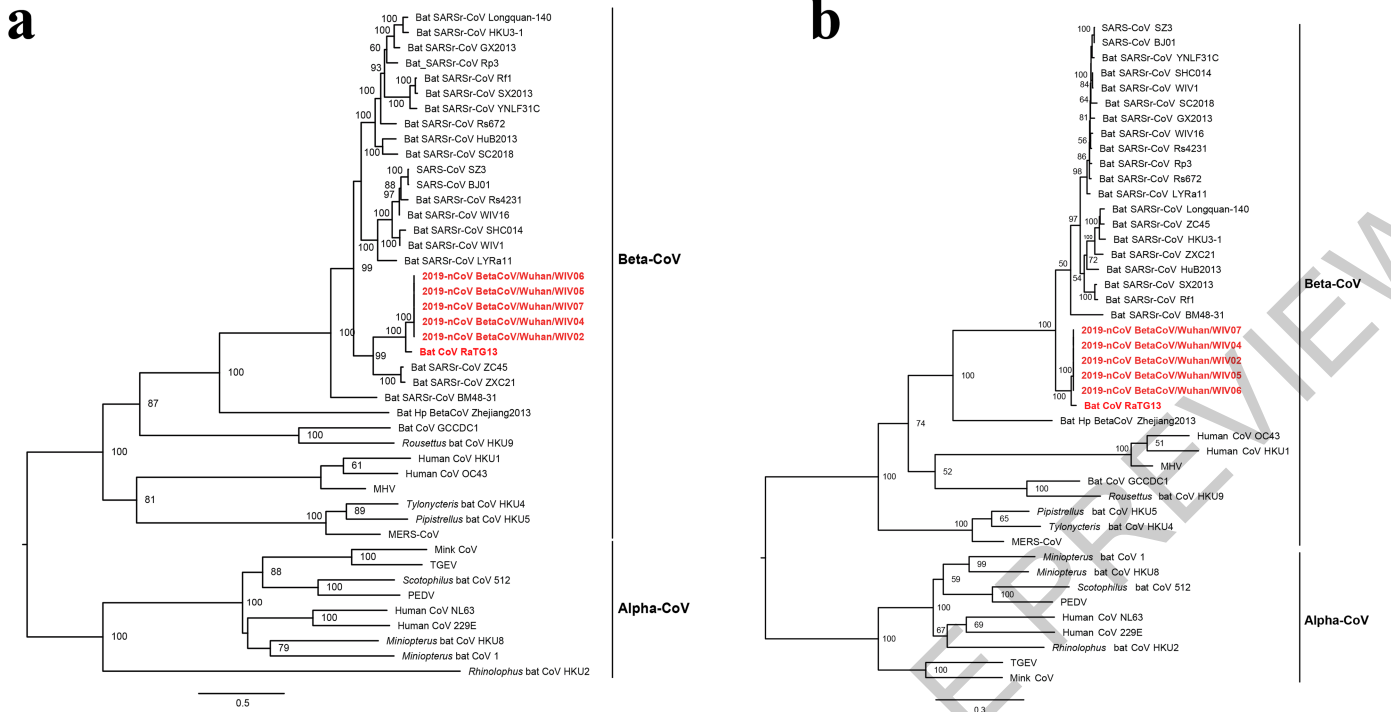
**Reprints and permissions information** is available at <http://www.nature.com/reprints>.

ACCELERATED ARTICLE PREVIEW



Extended Data Fig. 1 | NGS raw reads from WIV04 patient mapping to 2019-nCoV.

ACCELERATED ARTICLE PREVIEW



**Extended Data Fig. 2 | Phylogenetic tree base on the complete S (a) and RdRp (b) gene sequences of coronaviruses. 2019-nCoV and bat CoV RaTG13 are shown in bold and in red. The trees were constructed by the maximum**

likelihood method using the GTR+G substitution model with bootstrap values determined by 1000 replicates. Bootstraps > 50% are shown.

ACCELERATED ARTICLE PREVIEW



```

BetaCoV/Wuhan/WIV04 : ME-VFLVLLPLIVSS---CVNLTTRTCLFPAYNTSFRGVVYPRVFRSSVLSHTCDLFLPFSNVTAFHAEHVRGTNGTKR DNPVLEFRDGVYFAETKRSNIIRGWIFGTRL : 110
Bat_CoV_RaTG13 : ME-VFLVLLPLIVSS---CVNLTTRTCLFPAYNTSFRGVVYPRVFRSSVLSHTCDLFLPFSNVTAFHAEHVRGTNGTKR DNPVLEFRDGVYFAETKRSNIIRGWIFGTRL : 110
SARS-CoV_BJ01 : ME-IPLVFLITSGSDDLDRCTTFDDVQAPNYTCHTSSMRGVVYHDEIFRSDDLITCDLFLPFSNVTGFHINHT DNPVLEFRDGIYFAETKRSNVVRGWVFGSRL : 107
SARS-CoV_S23 : ME-IPLVFLITSGSDDLDRCTTFDDVQAPNYTCHTSSMRGVVYHDEIFRSDDLITCDLFLPFSNVTGFHINHT DNPVLEFRDGIYFAETKRSNVVRGWVFGSRL : 107
Bat_SARSr-CoV_WIV1 : MKLIVYGFAPIVSSYTIERCLDFDRTPPANTCFISSMRGVVYHDEIFRSDDLITCDLFLPFSNVTGFHINHT DNPVLEFRDGIYFAETKRSNVVRGWVFGSRL : 108
Bat_SARSr-CoV_HKU3-1 : MK-IPLVAFILANLAKACEGGLISRKPCEPMAQVSSFRGVVYHDEIFRSDDLITCDLFLPFSNVTGFHINHTSDRYTY DNPVLEFRDGVYFAETKRSNVVRGWVFGSRL : 113
Bat_CoV_ZC45 : MLEFLVLLQFATVNS---CVNLTGRTPFLNPNYNTSFRGVVYHDEIFRSDDLITCDLFLPFSNVTGFHINHTNAATR DNPVLEFRDGIYFAETKRSNIIRGWIFGTRL : 110

BetaCoV/Wuhan/WIV04 : DSKTQSLIVNNAITNVVIFWCFEFCNDPFLGVIYHNNKSWM SEFRVYSSANNCTFEVYVQGFHMDIEGCGNFRNLRFEVFNKIDGFKIYSKHTINLVLDLHCGFAEAF : 225
Bat_CoV_RaTG13 : DSKTQSLIVNNAITNVVIFWCFEFCNDPFLGVIYHNNKSWM SEFRVYSSANNCTFEVYVQGFHMDIEGCGNFRNLRFEVFNKIDGFKIYSKHTINLVLDLHCGFAEAF : 225
SARS-CoV_BJ01 : NNRKSGSVIINNSTNVVIFACNFEICDNPEFAVSRPISG---TTHMTLIDNANCTFEVYVQGFHMDIEGCGNFRNLRFEVFNKIDGFKIYSKHTINLVLDLHCGFAEAF : 218
SARS-CoV_S23 : NNRKSGSVIINNSTNVVIFACNFEICDNPEFAVSRPISG---TTHMTLIDNANCTFEVYVQGFHMDIEGCGNFRNLRFEVFNKIDGFKIYSKHTINLVLDLHCGFAEAF : 218
Bat_SARSr-CoV_WIV1 : NNRKSGSVIINNSTNVVIFACNFEICDNPEFAVSRPISG---TTHMTLIDNANCTFEVYVQGFHMDIEGCGNFRNLRFEVFNKIDGFKIYSKHTINLVLDLHCGFAEAF : 219
Bat_SARSr-CoV_HKU3-1 : DNTTQSAIVINNSHILIRVCFNLIKREEMITISRG---TQNAWVQSAANCTFEVYVQGFHMDIEGCGNFRNLRFEVFNKIDGFKIYSKHTINLVLDLHCGFAEAF : 222
Bat_CoV_ZC45 : DNTTQSLIVNNAITNVVIFWCFEFCNDPFLGVIYHNNKSWM SEFRVYSSANNCTFEVYVQGFHMDIEGCGNFRNLRFEVFNKIDGFKIYSKHTINLVLDLHCGFAEAF : 224

BetaCoV/Wuhan/WIV04 : IVDLPLGINTTRFQILLALRSYLTTPGDSSSGWTAGAAAYVGVLCRERFLLKYNENGTITDAVDCALDPTSEPKCKLRSHTVKGITYCTSNFRVCPESVVRFPNITNLCPRGE : 340
Bat_CoV_RaTG13 : IVDLPLGINTTRFQILLALRSYLTTPGDSSSGWTAGAAAYVGVLCRERFLLKYNENGTITDAVDCALDPTSEPKCKLRSHTVKGITYCTSNFRVCPESVVRFPNITNLCPRGE : 340
SARS-CoV_BJ01 : IFKLEPLGINTTRFRILTAAS---PACDHWGYSAAAYFVGLKRETFMLKYDENGTITDAVDCSONPLAEKCSVRSHEIDKGIYCTSNFRVCPESVVRFPNITNLCPRGE : 327
SARS-CoV_S23 : IFKLEPLGINTTRFRILTAAS---PACDHWGYSAAAYFVGLKRETFMLKYDENGTITDAVDCSONPLAEKCSVRSHEIDKGIYCTSNFRVCPESVVRFPNITNLCPRGE : 327
Bat_SARSr-CoV_WIV1 : IFKLEPLGINTTRFRILTAAS---PACDHWGYSAAAYFVGLKRETFMLKYDENGTITDAVDCSONPLAEKCSVRSHEIDKGIYCTSNFRVCPESVVRFPNITNLCPRGE : 328
Bat_SARSr-CoV_HKU3-1 : IFKLEPLGINTTRFRVIVAMAS---CQTSNPLFESAAAYVGNKYSTFMLRFNENGTITDAVDCSONPLAEKCKTKIRNENVEKGIYCTSNFRVCPESVVRFPNITNLCPRGE : 331
Bat_CoV_ZC45 : IVDLPLGINTTRFRILTAAS---PACDHWGYSAAAYFVGLKRETFMLKYDENGTITDAVDCALDPTSEPKCKLRSHTVKGITYCTSNFRVCPESVVRFPNITNLCPRGE : 336

BetaCoV/Wuhan/WIV04 : VFNARFESVYAWRRRISNCVADYSVLYNSA---SFTFKCYGVSATKINDLDCFTNYADSFVVRGDDVRCIAPGQTGLADYNYKLPDDHGGCVLIANSNRNIDATSKVGGNHNLYRL : 455
Bat_CoV_RaTG13 : VFNARFESVYAWRRRISNCVADYSVLYNSA---SFTFKCYGVSATKINDLDCFTNYADSFVVRGDDVRCIAPGQTGLADYNYKLPDDHGGCVLIANSNRNIDATSKVGGNHNLYRL : 455
SARS-CoV_BJ01 : VFNARFESVYAWRRRISNCVADYSVLYNSA---SFTFKCYGVSATKINDLDCFTNYADSFVVRGDDVRCIAPGQTGLADYNYKLPDDHGGCVLIANSNRNIDATSKVGGNHNLYRL : 442
SARS-CoV_S23 : VFNARFESVYAWRRRISNCVADYSVLYNSA---SFTFKCYGVSATKINDLDCFTNYADSFVVRGDDVRCIAPGQTGLADYNYKLPDDHGGCVLIANSNRNIDATSKVGGNHNLYRL : 442
Bat_SARSr-CoV_WIV1 : VFNARFESVYAWRRRISNCVADYSVLYNSA---SFTFKCYGVSATKINDLDCFTNYADSFVVRGDDVRCIAPGQTGLADYNYKLPDDHGGCVLIANSNRNIDATSKVGGNHNLYRL : 443
Bat_SARSr-CoV_HKU3-1 : VFNARFESVYAWRRRISDCVADYSVLYNSA---SFTFKCYGVSATKINDLDCFTNYADSFVVRGDDVRCIAPGQTGLADYNYKLPDDHGGCVLIANSNRNIDATSKVGGNHNLYRL : 441
Bat_CoV_ZC45 : VFNARFESVYAWRRRISDCIADYSVLYNSA---SFTFKCYGVSATKINDLDCFTNYADSFVVRGDDVRCIAPGQTGLADYNYKLPDDHGGCVLIANSNRNIDATSKVGGNHNLYRL : 446

472 479 487 491

BetaCoV/Wuhan/WIV04 : FRKSLKPFERDISHEIYQAGSTPCNGVEGRNCEHCSGFCPTNEVSCQPYR VVLSFELLNAPATVCGEPRSTLWKNKCVNFNENGLIGRGVLTSSKREKGFQFQGRDIA : 570
Bat_CoV_RaTG13 : FRKSLKPFERDISHEIYQAGSTPCNGVEGRNCEHCSGFCPTNEVSCQPYR VVLSFELLNAPATVCGEPRSTLWKNKCVNFNENGLIGRGVLTSSKREKGFQFQGRDIA : 570
SARS-CoV_BJ01 : LRHGELRPFERDISNVFSPDCKPQTP-PAINCYMPEKIDYGYTITGICQCPYR VVLSFELLNAPATVCGEPRSTLWKNKCVNFNENGLIGRGVLTSSKREKGFQFQGRDIA : 556
SARS-CoV_S23 : LRHGELRPFERDISNVFSPDCKPQTP-PAINCYMPEKIDYGYTITGICQCPYR VVLSFELLNAPATVCGEPRSTLWKNKCVNFNENGLIGRGVLTSSKREKGFQFQGRDIA : 556
Bat_SARSr-CoV_WIV1 : LRHGELRPFERDISNVFSPDCKPQTP-PAINCYMPEKIDYGYTITGICQCPYR VVLSFELLNAPATVCGEPRSTLWKNKCVNFNENGLIGRGVLTSSKREKGFQFQGRDIA : 557
Bat_SARSr-CoV_HKU3-1 : FRKSLKPFERDISDDG-----NGVITSSAYDENENVEVMAQATRY VVLSFELLNAPATVCGEPRSTLWKNKCVNFNENGLIGRGVLTSSKREKGFQFQGRDIA : 543
Bat_CoV_ZC45 : FRKSLKPFERDISDDE-----NGVITSSAYDENENVEVMAQATRY VVLSFELLNAPATVCGEPRSTLWKNKCVNFNENGLIGRGVLTSSKREKGFQFQGRDIA : 547

BetaCoV/Wuhan/WIV04 : DEDAVRDEPCTHEILDITPCSFGGVSVITPGTNSSEVAVLYCDVNCITVEVTHADCLTEWRVRYSTGNVFCRAGCLIGAETHVNSYECDDIPIGAGICASYH : 675
Bat_CoV_RaTG13 : DEDAVRDEPCTHEILDITPCSFGGVSVITPGTNSSEVAVLYCDVNCITVEVTHADCLTEWRVRYSTGNVFCRAGCLIGAETHVNSYECDDIPIGAGICASYH : 675
SARS-CoV_BJ01 : DEDAVRDEPCTHEILDITPCSFGGVSVITPGTNSSEVAVLYCDVNCITVEVTHADCLTEWRVRYSTGNVFCRAGCLIGAETHVNSYECDDIPIGAGICASYH : 661
SARS-CoV_S23 : DEDAVRDEPCTHEILDITPCSFGGVSVITPGTNSSEVAVLYCDVNCITVEVTHADCLTEWRVRYSTGNVFCRAGCLIGAETHVNSYECDDIPIGAGICASYH : 661
Bat_SARSr-CoV_WIV1 : DEDAVRDEPCTHEILDITPCSFGGVSVITPGTNSSEVAVLYCDVNCITVEVTHADCLTEWRVRYSTGNVFCRAGCLIGAETHVNSYECDDIPIGAGICASYH : 662
Bat_SARSr-CoV_HKU3-1 : DEDAVRDEPCTHEILDITPCSFGGVSVITPGTNSSEVAVLYCDVNCITVEVTHADCLTEWRVRYSTGNVFCRAGCLIGAETHVNSYECDDIPIGAGICASYH : 648
Bat_CoV_ZC45 : DEDAVRDEPCTHEILDITPCSFGGVSVITPGTNSSEVAVLYCDVNCITVEVTHADCLTEWRVRYSTGNVFCRAGCLIGAETHVNSYECDDIPIGAGICASYH : 652

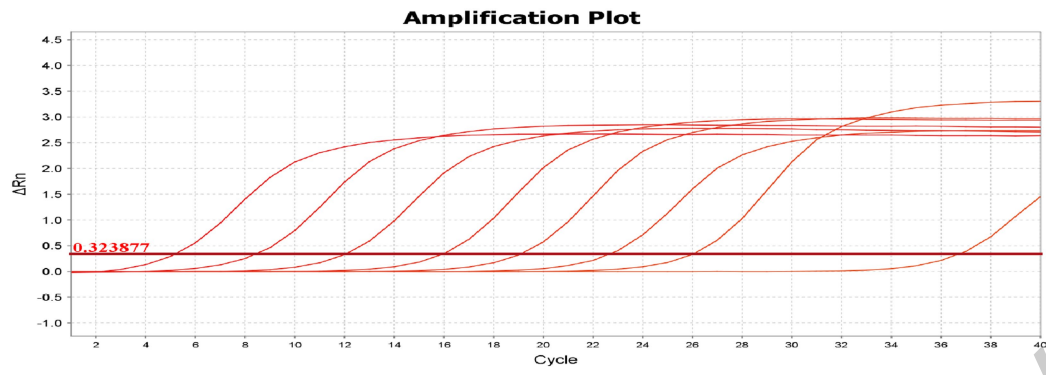
```

**Extended Data Fig. 3 | Amino acid sequence alignment of the S1 protein of the 2019-nCoV with SARS-CoV and selected bat SARSr-CoVs.** The receptor-binding motif of SARS-CoV and the homologous region of other coronaviruses are indicated by the red box. The key amino acid residues involved in the interaction with human ACE2 are numbered on top of the aligned sequences.

The short insertions in the N-terminal domain of the novel coronavirus are indicated by the blue boxes. Bat CoV RaTG13 was identified from *R. affinis* in Yunnan Province. Bat CoV ZC45 was identified from *R. sinicus* in Zhejiang Province.



**a**



**b**



**Extended Data Fig. 4 | Molecular detection method set up for 2019-nCoV. a,** standard curve for qPCR primers. PCR product of spike gene that was serially diluted to  $10^8$  to  $10^1$  (from left to right) was used as template. Primer sequence

and experiment condition can be found in material and methods. **b,** specificity of qPCR primers. Nucleotide samples from the indicated pathogens were used.

```

2019-nCoV : MSDNGPCNCRNAPRITFGGPDSTGSDNCGERRGARSKORRPOGLFNNTASWFTALTOHGKEDLRFPRGGVPIINTNSGDDCIGYRRATRIRGGDGRMKELSPRWYFYLLG : 114
Bat_SARsR-CoV_Rp3 : MSDNGPCNCRNAPRITFGGPDSTGSDNCGERRGARSKORRPOGLFNNTASWFTALTOHGKEDLRFPRGGVPIINTNSGDDCIGYRRATRIRGGDGRMKELSPRWYFYLLG : 114
SARS-CoV_BJ01 : MSDNGPCNCRNAPRITFGGPDSTGSDNCGERRGARSKORRPOGLFNNTASWFTALTOHGKEDLRFPRGGVPIINTNSGDDCIGYRRATRIRGGDGRMKELSPRWYFYLLG : 115

2019-nCoV : TGPEASLPGANKRGIWVATEGALNTPKDHIGTRNEFNNAATVQLPCGTTLPKGFYAEGRSGGSCASSRSSRSRNSRNSTPGSSRCISPARMAGNGDDALALLLLDRLNC : 229
Bat_SARsR-CoV_Rp3 : TGPEASLPGANKRGIWVATEGALNTPKDHIGTRNEFNNAATVQLPCGTTLPKGFYAEGRSGGSCASSRSSRSRNSRNSTPGSSRCISPARMAGNGDDALALLLLDRLNC : 229
SARS-CoV_BJ01 : TGPEASLPGANKRGIWVATEGALNTPKDHIGTRNEFNNAATVQLPCGTTLPKGFYAEGRSGGSCASSRSSRSRNSRNSTPGSSRCISPARMAGNGDDALALLLLDRLNC : 230

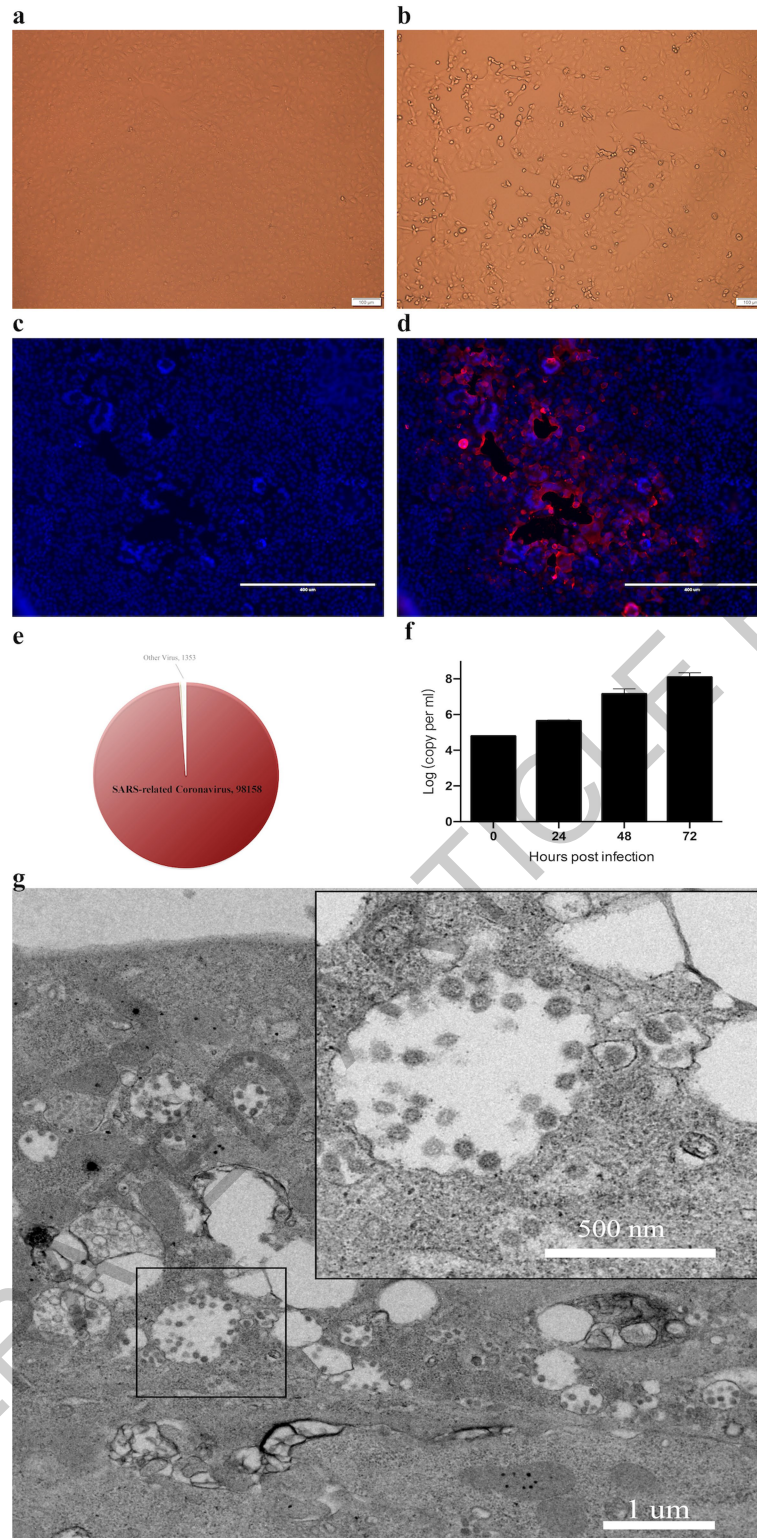
2019-nCoV : LESKMSGRCCQQCGTIVTKKSAAEASKKPRCKRTATKCYNVTCAFGRRGPECTCGNFGDCQLLRQGTDYKHWPCIAQFAPSASAFFGMSRIGMEVTPSGTWLTYHGAIKLDDKDF : 344
Bat_SARsR-CoV_Rp3 : LESKMSGRCCQQCGTIVTKKSAAEASKKPRCKRTATKCYNVTCAFGRRGPECTCGNFGDCQLLRQGTDYKHWPCIAQFAPSASAFFGMSRIGMEVTPSGTWLTYHGAIKLDDKDF : 344
SARS-CoV_BJ01 : LESKMSGRCCQQCGTIVTKKSAAEASKKPRCKRTATKCYNVTCAFGRRGPECTCGNFGDCQLLRQGTDYKHWPCIAQFAPSASAFFGMSRIGMEVTPSGTWLTYHGAIKLDDKDF : 345

2019-nCoV : NFKDQVILLNKHIDAYRIFPPTEPKKDKKKKIDEPQELPQRCKKCEVTLLPADLDDFSRQLCSMSGASADSTQA : 419
Bat_SARsR-CoV_Rp3 : NFKDQVILLNKHIDAYRIFPPTEPKKDKKKKIDEPQELPQRCKKCEVTLLPADMDDFSRQLCSMSGASADSTQA : 421
SARS-CoV_BJ01 : NFKDQVILLNKHIDAYRIFPPTEPKKDKKKKIDEPQELPQRCKKCEVTLLPADMDDFSRQLCSMSGASADSTQA : 422

```

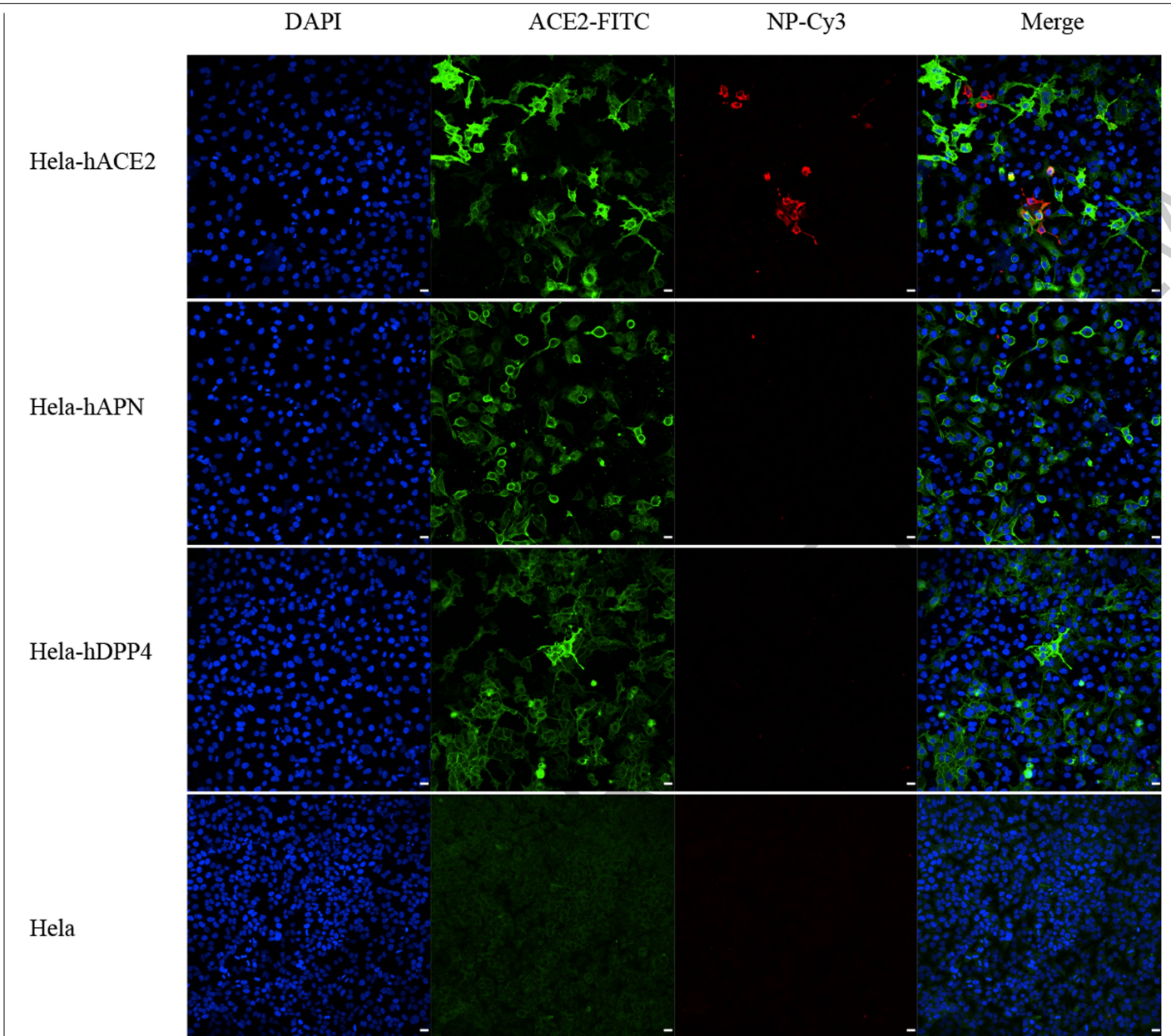
Extended Data Fig. 5 | Amino acid sequence alignment of the nucleocapsid protein of 2019-nCoV with bat SARsR-CoV Rp3 and SARS-CoV BJ01.

ACCELERATED ARTICLE PREVIEW



**Extended Data Fig. 6 | Isolation and antigenic characterization of 2019-nCoV.** Vero E6 cells are shown at 24 hours post infection with mock (a) or 2019-nCoV (b). (c) and (d) are mock or 2019-nCoV infected samples stained with rabbit serum raised against recombinant SARSr-CoV Rp3 N protein (red) and DAPI (blue). The experiment was conducted two times independently with

similar results. e and f, pie charts illustrating ratio of reads number related to 2019-nCoV among total viral related reads in metagenomics analysis of Vero (e) and Huh7 (f) cell culture supernatant. (g) viral particles in the ultrathin sections under electron microscope at 200 kV, sample from viral infected Vero E6 cells.



**Extended Data Fig. 7 | Analysis of 2019-nCoV receptor usage.** Determination of virus infectivity in HeLa cells with or without the expression of human APN and DPP4. ACE2 protein (green), viral protein (red) and nuclei (blue) were shown. Scale bar=10 um.

ACCELERATOR



# Article

## Extended Data Table 1 | Patient information and their diagnosis history (some records are missing)

| Patient No. | Gender | Age | Date of Onset | Date of Admission | Symptoms When Admitted                           | Current Status (2020.01.13)                        | Diagnosis history             |
|-------------|--------|-----|---------------|-------------------|--|--|-------------------------------|
| ICU-01*     | Male   | 62  | 2019.12.12    | 2019.12.27        | fever  | recover, discharged                                | negative                      |
| ICU-04      | Male   | 32  | 2019.12.19    | 2019.12.29        | fever, cough, dyspnea                            | fever, intermittent cough                          | negative                      |
| ICU-05      | Male   | 40  | 2019.12.17    | 2019.12.27        | fever (38 °C), expectoration, malaise, dyspnea   | fever, malaise, intermittent cough                 | AdV (IgM)                     |
| ICU-06      | Female | 49  | 2019.12.23    | 2019.12.27        | fever (37.9 °C), palpitation                     | fever, malaise, cough                              | Coronavirus (nt)              |
| ICU-08      | Female | 52  | 2019.12.22    | 2019.12.29        | fever (38.5 °C), expectoration, malaise, dyspnea | recover, discharged                                | Streptococcus pneumoniae (nt) |
| ICU-09      | Male   | 40  | 2019.12.22    | 2019.12.28        | fever (38.5 °C), expectoration                   | fever (38.5 °C), malaise, expectoration, dizziness | negative                      |
| ICU-10      | Male   | 56  | 2019.12.20    | 2019.12.20        | fever, dyspnea, chest tightness                  | fever, malaise, cough, dyspnea                     | negative                      |

All patients are seafood market sellers or deliverymen except ICU-01, whose contact history is unclear. All patients were in intensive care unit (ICU) during the first investigation, and now in stable condition. Blood IgM tests have been performed for the following respiratory pathogens for all patients: legionella pneumophila, mycoplasma pneumoniae, chlamydia pneumoniae, respiratory syncytial virus, adenovirus, rickettsia, influenza A virus, influenza B virus, parainfluenza virus. \*This patient reported fever on 2019.12.12, and then recovered without medical treatment. He came back to hospital on 2019.12.27 due to fever. His wife was also sick and admitted to hospital. Both of them were recovered.

**Extended Data Table 2 | Laboratory detection results**

| Patient No. | Test No.            | First sampling-2019.12.30 |           |            | Second sampling-2020.01.10 |           |             |            |
|-------------|---------------------|---------------------------|-----------|------------|----------------------------|-----------|-------------|------------|
|             |                     | BALF                      | Oral Swab | Blood (Ab) | Oral Swab                  | Anal Swab | Blood (PCR) | Blood (Ab) |
| ICU-01      | WIV01               | -                         | Ct=32.0   | NA         | NA                         | NA        | NA          | NA         |
| ICU-04      | WIV02 <sup>#</sup>  | Ct=17.6                   | Ct=26.6   | NA         | -                          | -         | -           | +          |
| ICU-05      | WIV03               | Ct=27.0                   | Ct=31.9   | NA         | -                          | -         | -           | +          |
| ICU-06      | WIV04 <sup>#*</sup> | Ct=18.3                   | Ct=27.7   | +          | -                          | -         | -           | +          |
| ICU-08      | WIV05 <sup>#</sup>  | Ct=24.1                   | -         | NA         | NA                         | NA        | NA          | NA         |
| ICU-09      | WIV06 <sup>#</sup>  | Ct=21.6                   | Ct=29.4   | NA         | -                          | -         | -           | +          |
| ICU-10      | WIV07 <sup>#</sup>  | Ct=25.7                   | Ct=24.0   | NA         | -                          | -         | -           | +          |

Samples from two patients (ICU-01 and ICU-08) were not available during the second investigation. They have been discharged from hospital. We did serial test for ICU-06 patient at the following date: 19.12.30, 19.12.31, 20.01.01 and 20.01.10, corresponding to seven, eight, nine and eighteen days upon disease onset (19.12.23). Table shows molecular and serological (IgM and IgG) detection results for 2019-nCoV. <sup>#</sup>Full-length genome obtained. \*Virus isolated.

# Article

**Extended Data Table 3 | Genomic comparison of 2019-nCoV WIV04 with SARS-CoVs and bat SARSr-CoVs**

| Sequence identities with SARS-CoVs & bat SARSr-CoVs (nt/aa %) |                    |           |           |           |           |           |           |           |           |           |           |           |
|---|--------------------|-----------|-----------|-----------|-----------|-----------|-----------|-----------|-----------|-----------|-----------|-----------|
|   | Full-length genome | ORF1a     | ORF1b     | S         | ORF3a     | E         | M         | ORF6      | ORF7a     | ORF7b     | ORF8      | N         |
| SARS-CoV GZ02   | 79.6               | 76.0/80.9 | 86.2/95.7 | 73.4/77.0 | 75.6/73.4 | 94.7/96.0 | 85.4/90.5 | 76.3/68.9 | 82.8/86.0 | 84.8/81.4 | 52.0/31.6 | 87.7/91.2 |
| SARS-CoV BJ01   | 79.6               | 76.0/80.8 | 86.2/95.7 | 73.4/76.9 | 75.3/72.6 | 94.7/96.0 | 85.6/90.5 | 75.8/67.2 | 82.8/86.0 | 84.8/81.4 | 51.1/-    | 88.8/91.2 |
| SARS-CoV Tor2   | 79.6               | 76.0/80.9 | 86.2/95.8 | 73.4/76.7 | 75.4/72.6 | 94.7/96.0 | 85.6/90.5 | 76.3/68.9 | 82.8/86.0 | 84.8/81.4 | 51.1/-    | 88.8/91.2 |
| SARS-CoV SZ3  | 79.6               | 76.0/81.0 | 86.2/95.8 | 73.4/76.9 | 75.4/72.6 | 94.7/96.0 | 85.3/90.0 | 76.3/68.9 | 82.8/86.0 | 84.8/81.4 | 52.3/31.6 | 88.8/91.2 |
| SARS-CoV PC4-227  | 79.5               | 76.0/80.8 | 86.1/95.6 | 73.4/76.7 | 75.5/72.6 | 94.7/96.0 | 85.1/90.0 | 75.8/68.9 | 82.8/86.0 | 84.8/81.4 | 52.3/-    | 88.5/90.7 |
| Bat SARSr-CoV RaTG13  | 96.2               | 96.0/98.0 | 97.3/99.3 | 93.1/97.7 | 96.3/97.8 | 99.6/100  | 95.5/99.6 | 98.4/100  | 95.6/97.5 | 99.2/97.7 | 97.0/95.0 | 96.9/99.0 |
| Bat SARSr-CoV WIV1  | 79.7               | 76.0/80.7 | 85.9/95.8 | 73.4/77.6 | 76.1/74.5 | 95.6/96.0 | 84.8/90.0 | 78.0/73.8 | 85.0/88.4 | 85.6/83.7 | 65.8/57.9 | 88.5/90.9 |
| Bat SARSr-CoV WIV16   | 79.7               | 75.9/81.0 | 86.1/95.6 | 73.1/77.8 | 76.1/74.5 | 95.6/96.0 | 84.8/90.0 | 77.4/72.1 | 85.0/88.4 | 85.6/83.7 | 65.3/57.9 | 88.6/90.9 |
| Bat SARSr-CoV SHC014  | 79.6               | 75.9/80.9 | 85.9/95.8 | 73.3/77.7 | 76.1/74.5 | 95.6/96.0 | 84.8/90.0 | 78.0/70.5 | 84.4/88.4 | 85.6/83.7 | 65.8/58.7 | 88.6/90.9 |
| Bat SARSr-CoV Rs4231  | 79.7               | 76.0/81.0 | 86.2/95.8 | 72.9/77.5 | 75.8/74.1 | 94.3/94.7 | 84.4/90.0 | 76.9/67.2 | 85.0/88.4 | 85.6/83.7 | 65.3/57.9 | 88.8/91.4 |
| Bat SARSr-CoV YNLF31C   | 79.0               | 75.7/80.6 | 85.8/95.7 | 71.4/75.5 | 75.0/71.2 | 94.3/96.0 | 84.7/89.6 | 76.9/70.5 | 83.1/87.6 | 86.4/83.7 | 50.3/31.3 | 88.3/90.5 |
| Bat SARSr-CoV LYRa11  | 79.6               | 75.8/80.6 | 85.7/95.6 | 73.9/77.3 | 77.2/76.3 | 94.7/94.7 | 85.1/90.0 | 78.5/70.5 | 82.0/85.1 | 81.1/81.4 | 66.7/57.9 | 89.0/91.6 |
| Bat SARSr-CoV ZC45  | 88.1               | 91.0/95.7 | 86.1/96.0 | 77.8/82.3 | 87.8/90.9 | 98.7/100  | 93.4/98.6 | 95.2/93.4 | 88.8/87.6 | 94.7/93.0 | 88.5/94.2 | 91.1/94.3 |
| Bat SARSr-CoV ZXC21   | 88.0               | 90.9/95.7 | 86.2/95.8 | 77.1/81.7 | 88.9/92.0 | 98.7/100  | 93.4/98.6 | 95.2/93.4 | 89.1/88.4 | 95.5/93.0 | 88.5/94.2 | 91.2/94.3 |
| Bat SARSr-CoV HuB2013   | 79.6               | 76.3/81.2 | 85.3/95.7 | 73.1/76.8 | 75.4/75.5 | 95.2/94.7 | 85.3/91.0 | 76.3/68.9 | 84.2/87.6 | 85.6/83.7 | 62.0/49.6 | 88.9/91.6 |
| Bat SARSr-CoV GX2013  | 79.1               | 75.9/80.8 | 86.0/95.9 | 73.1/77.1 | 75.6/73.0 | 94.7/96.0 | 84.8/91.4 | 77.4/68.9 | 85.0/86.8 | 84.1/79.1 | 51.4/31.6 | 87.9/90.2 |
| Bat SARSr-CoV SX2013  | 78.9               | 76.2/80.6 | 85.1/95.5 | 71.2/75.5 | 74.7/71.2 | 94.3/93.3 | 83.0/89.6 | 77.4/68.9 | 84.2/86.8 | 85.6/83.7 | 49.7/30.4 | 86.9/90.2 |
| Bat SARSr-CoV SC2018  | 79.4               | 75.8/80.7 | 85.5/95.2 | 72.7/76.4 | 75.0/71.2 | 94.3/96.0 | 84.7/90.0 | 80.0/71.8 | 85.2/87.6 | 84.8/83.7 | 66.1/55.4 | 88.2/91.2 |
| Bat SARSr-CoV Rs672   | 79.6               | 76.0/80.9 | 85.9/95.8 | 72.8/76.2 | 75.2/71.9 | 95.2/96.0 | 84.8/89.6 | 78.5/70.5 | 84.7/88.4 | 85.6/83.7 | 65.8/58.7 | 87.9/91.2 |
| Bat SARSr-CoV Rp3   | 79.5               | 75.9/80.5 | 86.0/95.7 | 73.1/77.2 | 74.9/74.8 | 95.2/96.0 | 85.1/90.0 | 76.9/68.9 | 83.9/89.3 | 84.8/83.7 | 66.4/56.2 | 88.4/90.7 |
| Bat SARSr-CoV Rf1   | 78.8               | 76.2/80.6 | 84.8/95.3 | 71.1/75.7 | 74.3/69.0 | 94.3/94.7 | 83.3/89.6 | 79.0/68.9 | 84.2/86.8 | 84.1/83.7 | 50.6/31.3 | 86.8/89.5 |
| Bat SARSr-CoV HKU3-1  | 79.4               | 76.1/80.9 | 84.9/95.1 | 73.4/77.9 | 75.8/73.4 | 95.2/96.0 | 84.7/91.0 | 75.3/67.2 | 85.0/89.3 | 84.1/79.1 | 66.4/57.0 | 88.3/90.0 |

ACCELERATED ARTICLE PREVIEW

**Extended Data Table 4 | Virus neutralization test (VNT) of serum samples**

| Samples                      | VNT titre for nCoV-2019 |
|------------------------------|-------------------------|
| Healthy people #1 from Wuhan | neg                     |
| Healthy people #2 from Wuhan | neg                     |
| Horse anti-SARS-CoV serum    | >1:80                   |
| WIV02                        | >1:80                   |
| WIV03                        | 1:40                    |
| WIV04                        | >1:80                   |
| WIV06                        | >1:80                   |
| WIV07                        | >1:80                   |

Each serum sample was tested in triplicate. Two healthy people from Wuhan, five patient serum samples and a horse anti-SARS-CoV anti-serum were used. 120 TCID<sub>50</sub> viruses were used each well. Serum samples were used in a dilution from 1:10, 1:20, 1:40 to 1:80.

ACCELERATED ARTICLE PREVIEW



## Reporting Summary

Nature Research wishes to improve the reproducibility of the work that we publish. This form provides structure for consistency and transparency in reporting. For further information on Nature Research policies, see [Authors & Referees](#) and the [Editorial Policy Checklist](#).

### Statistics

For all statistical analyses, confirm that the following items are present in the figure legend, table legend, main text, or Methods section.

n/a Confirmed

- The exact sample size ( $n$ ) for each experimental group/condition, given as a discrete number and unit of measurement
- A statement on whether measurements were taken from distinct samples or whether the same sample was measured repeatedly
- The statistical test(s) used AND whether they are one- or two-sided  
*Only common tests should be described solely by name; describe more complex techniques in the Methods section.*
- A description of all covariates tested
- A description of any assumptions or corrections, such as tests of normality and adjustment for multiple comparisons
- A full description of the statistical parameters including central tendency (e.g. means) or other basic estimates (e.g. regression coefficient) AND variation (e.g. standard deviation) or associated estimates of uncertainty (e.g. confidence intervals)
- For null hypothesis testing, the test statistic (e.g.  $F$ ,  $t$ ,  $r$ ) with confidence intervals, effect sizes, degrees of freedom and  $P$  value noted  
*Give  $P$  values as exact values whenever suitable.*
- For Bayesian analysis, information on the choice of priors and Markov chain Monte Carlo settings
- For hierarchical and complex designs, identification of the appropriate level for tests and full reporting of outcomes
- Estimates of effect sizes (e.g. Cohen's  $d$ , Pearson's  $r$ ), indicating how they were calculated

*Our web collection on [statistics for biologists](#) contains articles on many of the points above.*

### Software and code

Policy information about [availability of computer code](#)

Data collection

No software was used.

Data analysis

BWA (v0.712-r1039), Cutadapt (v1.18), Geneious (v11.0.3), MEGAHIT (v1.2.9), Clone Manager Professional Suite 8, MAFFT (v7.307), MGmapper (PE2.24 and SE2.24), PAL2NAL (version 14), Clustal Omega (version 1.2.4), RAxML (version 0.9.0)

For manuscripts utilizing custom algorithms or software that are central to the research but not yet described in published literature, software must be made available to editors/reviewers. We strongly encourage code deposition in a community repository (e.g. GitHub). See the Nature Research [guidelines for submitting code & software](#) for further information.

### Data

Policy information about [availability of data](#)

All manuscripts must include a [data availability statement](#). This statement should provide the following information, where applicable:

- Accession codes, unique identifiers, or web links for publicly available datasets
- A list of figures that have associated raw data
- A description of any restrictions on data availability

Sequence data that support the findings of this study have been deposited in GISAID with the accession no. EPI\_ISL\_402124 and EPI\_ISL\_402127-402130.

### Field-specific reporting

Please select the one below that is the best fit for your research. If you are not sure, read the appropriate sections before making your selection.

- Life sciences       Behavioural & social sciences       Ecological, evolutionary & environmental sciences

## Life sciences study design

All studies must disclose on these points even when the disclosure is negative.

|                 |   |
|-----------------|---|
| Sample size     | Samples of seven pneumonia patients are available from the clinical hospital to be sent to Wuhan Institute of Virology for pathogen identification. The coronavirus genome sequences were obtained from 5 different patients and shared >99.9% identity, suggesting they were infected by the same virus. Therefore, the sample size is sufficient for conducting the following study which aims to identify and characterize the causative agent of this pneumonia outbreak. |
| Data exclusions | No data excluded  |
| Replication     | The authors guarantee the findings are reliably reproducible. At least three independent experiments were performed, which was stated in the text.  |
| Randomization   | Samples were chosen randomly.   |
| Blinding        | We were blinded when choosing samples.  |

## Reporting for specific materials, systems and methods

We require information from authors about some types of materials, experimental systems and methods used in many studies. Here, indicate whether each material, system or method listed is relevant to your study. If you are not sure if a list item applies to your research, read the appropriate section before selecting a response.

### Materials & experimental systems

| n/a                                 | Involved in the study   |
|-------------------------------------|---|
| <input type="checkbox"/>            | <input checked="" type="checkbox"/> Antibodies                  |
| <input type="checkbox"/>            | <input checked="" type="checkbox"/> Eukaryotic cell lines       |
| <input checked="" type="checkbox"/> | <input type="checkbox"/> Palaeontology                          |
| <input checked="" type="checkbox"/> | <input type="checkbox"/> Animals and other organisms            |
| <input type="checkbox"/>            | <input checked="" type="checkbox"/> Human research participants |
| <input checked="" type="checkbox"/> | <input type="checkbox"/> Clinical data                          |

### Methods

| n/a                                 | Involved in the study                           |
|-------------------------------------|---|
| <input checked="" type="checkbox"/> | <input type="checkbox"/> ChIP-seq               |
| <input checked="" type="checkbox"/> | <input type="checkbox"/> Flow cytometry         |
| <input checked="" type="checkbox"/> | <input type="checkbox"/> MRI-based neuroimaging |

## Antibodies

|                 |  |
|-----------------|--|
| Antibodies used | 1. SARSr-CoV Rp3 NP antibody made in house; 2. Cy3-conjugated mouse anti-rabbit IgG; 3. Anti-Human IgG-HRP conjugated monoclonal antibody (Kyab Biotech Co., Ltd, Wuhan, China, dilution: 1:40000); 4. Anti-Rp3 NP-HRP conjugated (Kyab Biotech Co., Ltd, Wuhan, China, dilution: 1:4000); 5. FITC-labelled goat anti-mouse IgG H&L (Abcam, ab96879, dilution 1:100); 6. cyanin 3-conjugated goat anti-rabbit IgG (Abcam, ab6939, dilution: 1:50); 7. mouse anti-S tag monoclonal antibody made in house (1:10000) |
| Validation      | The house-made SARSr-CoV Rp3 NP antibodies and anti-S tag monoclonal antibody were validated in a WB. The cy3-conjugated anti-rabbit IgGs were validated in IFA. The FITC-labelled goat anti-mouse IgG H&L was validated in IHC.   |

## Eukaryotic cell lines

Policy information about [cell lines](#)

|   |  |
|---|--|
| Cell line source(s)   | 1. African green monkey origin, Vero and Vero E6 cells; 2. Human lung cell Huh7 ; 3. Human HeLa cells. All cell lines were from ATCC.  |
| Authentication  | All monkey and human cells were from ATCC with authentication. The authentication was performed by microscope morphology check, growth curve analysis or identity verification with STR analysis (for human cell lines). |
| Mycoplasma contamination  | We confirm that all cells were tested as mycoplasma negative.  |
| Commonly misidentified lines (See <a href="#">ICLAC</a> register) | No commonly misidentified cell lines were used.  |

## Human research participants

---

Policy information about [studies involving human research participants](#)

Population characteristics

Participants were all 2019-nCoV infected patients.

Recruitment

Samples were sent to Wuhan Institute of Virology by hospital for pathogen identification.

Ethics oversight

Wuhan Jinyintan Hospital (the co-authored institution)

Note that full information on the approval of the study protocol must also be provided in the manuscript.